

### ***A Single Solution for Information Capture***

---

Kofax Capture accelerates business processes by collecting documents and forms, transforming them into accurate, retrievable information, and delivering it all into your business applications and databases. Whether your information is on paper or in electronic files, whether it is parked at a central office or scattered on desktops and remote offices throughout the world, Kofax Capture can help you capture it all quickly and accurately.

Kofax Capture also offers unmatched compatibility with scanners and other capture devices, plus content and document management systems, workflow applications and databases. No matter what hardware or enterprise applications you choose now or in the future, you can count on Kofax Capture to ensure consistent capture, indexing and validation of your important information. Import Controller Create front-end scripts to feed Kofax Capture from enterprise applications such as financials, human resources, manufacturing, and management decision support.

### ***Capture Documents, Data, and More***

---

Kofax Capture delivers powerful, production-level document and data capture. For document capture, it boasts the fastest, most flexible scanning and indexing solution around. For data capture, Kofax Capture extracts important information such as machine-printed text, bar codes, hand-printed words and even checked boxes. What's more, Kofax Capture uses the same powerful indexing and validation process to capture information that doesn't start on paper, such as electronic documents. That means your workflow or content management system receives consistently indexed content – no matter what the source – and your enterprise benefits from reliable, easy and fast retrieval of all your information.

### ***Remote Capture***

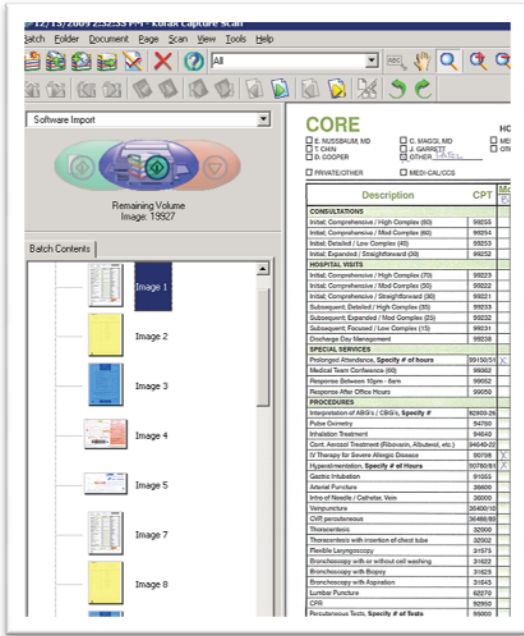
---

Many organizations rely on document-driven processes that originate at a remote location but must be completed elsewhere. The Kofax Capture Network Server is a proven, reliable method for accelerating and reducing the cost of these remote business processes. Included with Kofax Capture, the network server allows you to capture documents and data from your organization's remote offices directly into your Kofax Capture system.



S4i Systems, Inc.  
616 South El Camino Real  
Suite M  
San Clemente, CA 92672  
949/366.5234 ph  
800/231.5280 ph  
949/366.5338 fax  
[www.s4isystems.com](http://www.s4isystems.com)

The leading enterprise software solution for automatically capturing documents from both paper and electronic sources.



## Scalable for Growth

Kofax Capture is a modular application that can be used right out of the box to meet the information capture needs of a specific department, and expanded to meet the complex requirements of a high-volume, mission-critical enterprise. From hundreds to millions of documents per day, Kofax Capture can capture it all.

## Customizable to Meet Your Needs

You can tailor Kofax Capture to support your precise business processes with dozens of plug-and-play modules – from automated document separation, to postal mail scanning, to automatic classification of unstructured documents, to powerful forms-processing tools that extract information from even the most difficult documents. Or you can write your own. Kofax Capture’s flexible, open architecture makes it possible and comes with example module code to get you started.

## Kofax Capture Enterprise Edition

Kofax Capture is also available in an enterprise edition that offers high availability and disaster recovery for mission-critical implementations. Remote, real-time management of system performance enables you to handle exceptions quickly and meet throughput requirements. Kofax Capture easily extends information capture throughout your enterprise by taking advantage of Terminal Services and Citrix® server technology, providing remote, on-demand access to Kofax Capture modules, and enabling the processing of more documents in less time via multiple-instance support. Additionally, Kofax Capture Enterprise Edition offers options for enterprise-class database management systems such as IBM DB2, Microsoft SQL Server Enterprise, and Oracle Database.

